



Lhyzel Caluza, Spring 2025



Thalia Loomer, Spring 2025



Abby Christian, Spring 2025



Elena Mombourquette, Spring 2025



Jorja Munroe, Spring 2025



Isla Dove, Spring 2025



Warren White, Spring 2025



Esther Abiri, Spring 2025



Kate Nguyen, Spring 2025



Evan Cole, Spring 2025

Clay Vessel

___/10 **Idea development**
Development so far: _____

Criteria for your finished Clay Vessel:

Clay skills

Strength, balance and surface finish

Quality of Carving

Complexity, quality, fullness, and craft

Daily Clean-up Habits

Cleaning table & floor to be streak-free

Clay vessel project evaluation

Clay skills

The strength, balance, and surface finish of your clay vessel

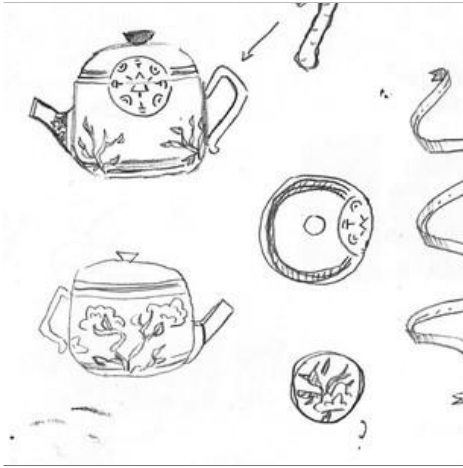
Quality of carving

The complexity, quality, fullness, and craft of the patterns and line drawing on your vessel

Daily clean-up habits

Cleaning your table and floor so it is clean and has no streaks

Building your vessel step by step



1. Develop your **idea** first!



2. Divide your clay into four pieces: one for a **base**, two for **coils**, and one for **everything else** and for emergencies.



3. Make the **bottom**: a disc of clay that is 1-1.5 cm thick and 7-10 cm in diameter. **Store any leftovers** in your bag.



7. **Stretch** the coils by **spreading** your fingers while rolling.



8. **Smear** your coils together using only **one finger** or one thumb.



9. **Don't pinch** on either side because you will make your pot very dry and thin.



13. Add a **foot** by attaching a coil.



14. **Scribe** and then **trim the lip**.



15. Coat your pot with **white slip**. Let it dry and add coats until there are **no streaks**.



4. Keep it fairly **rough** because smoothing it will dry it out.



5. Make a series of **coils** that are about 1-1.5cm thick.



6. Remember that you are **not squeezing** the coils. **Work quickly!**



10. **Smooth the inside** with your **fingers**. If you can't reach, it is OK.



11. Shape your vessel by **paddling** it with a wooden spoon or stick.



12. Shave it with a **knife**. Then **smooth** it with a metal/plastic/silicone **rib**.



16. Do a very **light rough sketch** of your drawing on your pot.



17. Take a sharpened pencil and **carve through the slip** into the brown clay.



18. Finally, carve your **name** on the bottom.



Esra Hussein Ali Mahmoud, Fall 2023



Islau Hamadi Juma, Fall 2023



Marina Saez Vinals, Fall 2023



Kadince Hunter, Fall 2023



Payton Lohnes, Fall 2023



Braedan Alguire, Fall 2023



Carson Shea, Fall 2023



Elijah Cochrane, Fall 2024



Shannen Irvine, Fall 2023



Cami Raquet, Fall 2023



Tina Chandra Sekar, Fall 2023



Lisa Khutjwe, Fall 2023

Clay vessel hall of fame



Lily Lowe, Fall 2017



Adriana Lilley-Osende, Spring 2017

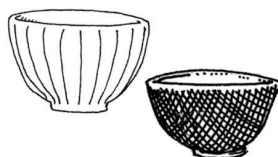


Yuri Jungi, Fall 2012

BOWLS

wan, hachi

碗、鉢



RICE BOWLS
御飯茶碗
gohan jawan



DONBURI * BOWL
丼鉢
donburi bachi
* Rice covered with egg and / or vegetables and meat.



LARGE BOWL
大鉢
ōbachi



LARGE WIDE DISH
平鉢
hirabachi



NESTING BOWLS
入れ子
ireko



SMALL BOWLS
小鉢
kobachi



LARGE PLATE
大皿
ōzara



SOBA* CUPS
そば猪口
soba choko

* Buckwheat noodles - the cup is for the sauce into which they are dipped.

OTHER POTS

CHINESE SPOON
散り蓮華
chirirenge



CHAWAN MUSHI* POT
茶碗蒸し碗
chawan mushi wan
*A steamed, savoury egg custard.



PICKLE POTS
漬け物鉢
tsukemono bachi



TIERED BOX
段重、重ね鉢
danjū, kasane bachi



DISH WITH HANDLE
手鉢
tebachi

90

shokki
食器

COOKING AND EATING



GRATING DISHES
おろし皿
oroshi zara



SOY SAUCE JUGS
しょうゆ差し
shōyū sashi



SESAME SEED ROASTER
ゴマ煎り
goma iri

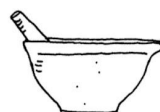


SMALL PICKLE POTS
珍味壺
chinmi tsubo

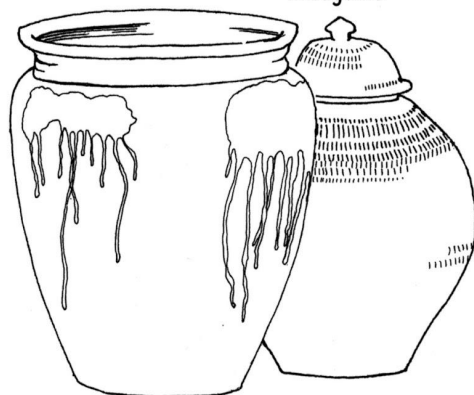


PICKLE MAKING POT
漬物鉢
tsukemono bachi

the heavy lid acts as a weight to press down the pickles inside.



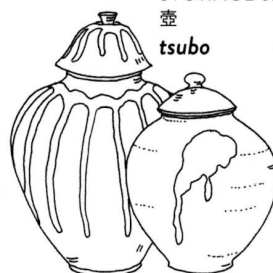
MORTAR / GRINDING BOWL
すり鉢
suribachi



LARGE WATER JARS
水がめ
mizugame



BOWL WITH SPOUT
片口
katakuchi



STORAGE JAR
壺
tsubo



COOKING POT
行平鍋
yukihiranabe



CASSEROLE
土鍋
donabe
usually used for cooking over direct flame

CUPS

yunomi to choko
湯呑みと猪口



101

SAKE CUPS
ぐい呑み
guinomi

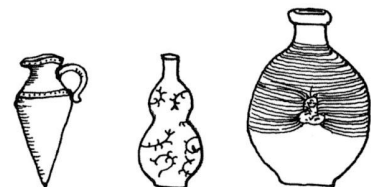
nomiyōki
飲み容器

DRINKING VESSELS



SMALL SAKE CUPS
猪口
choko

SAKE BOTTLES
徳利
tokkuri



HIP FLASK
抱瓶
dachibin



kambin
燗瓶



POTS FOR WARMING LIQUOR



choka
チョコカ

karakara*
カラカラ

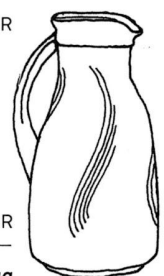


CUP AND SAUCER
碗皿
wanzara



MUG
マグカップ
magukappu

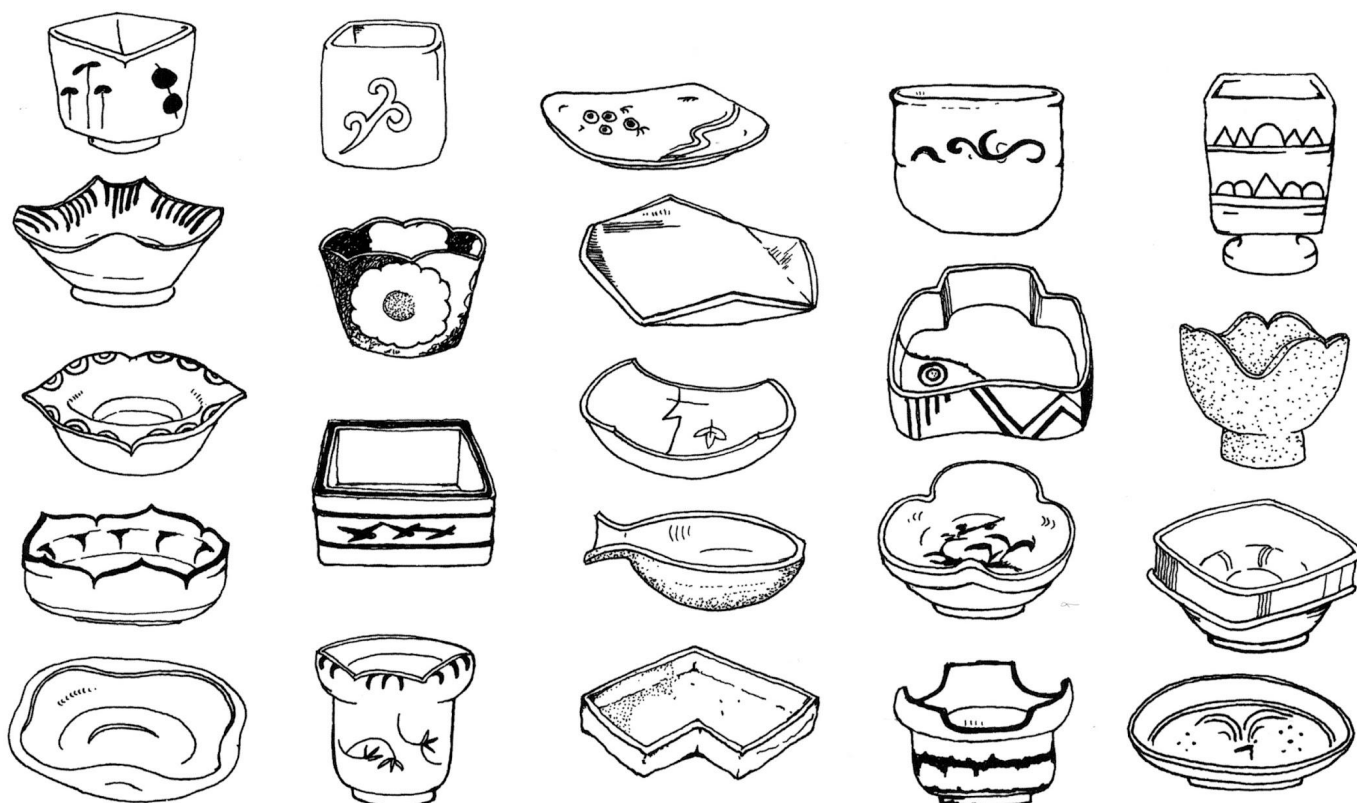
JUG / PITCHER
ジャグ、ピッチャー
jagu / picchaa



*karakara used to be made (esp. in Okinawa) enclosing beads, which would rattle to indicate the flask was empty-
karakara is said to be the sound of the rattling beads. Kara also means empty.

SMALL SERVING DISHES

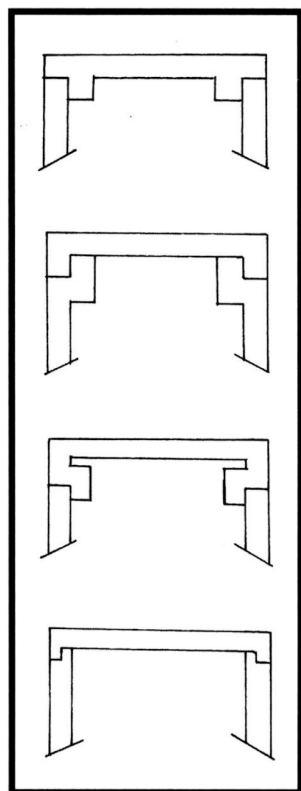
mukōzuke to kozara
向こう付と小皿



102

LIDS

futa
蓋

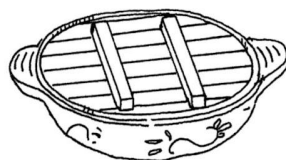


IVORY LID
象牙の蓋
zōge no futa

LAQUER LID
塗り蓋
nuribata



WOODEN LID
木の蓋 (鍋蓋)
ki no futa (nabe buta)



BENT RIM
首型
kubigata

FLAT LID
平蓋
hirabuta

DOMED LID
山蓋
yamabuta

ROLLED OVER RIM
折り曲げて作る気持
orimagete tsukuru kimochi

SPLIT GALLERY RIM
土を半分下げ
て作る気持
tsuchi o hanbun sagete
tsukuru kimochi

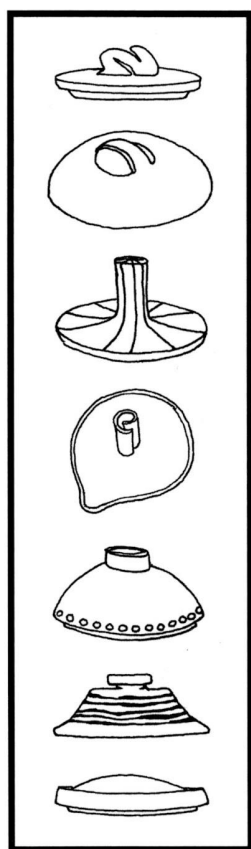
RECESSED KNOB LID
落とし蓋
otoshibuta

THE LID FITS WELL
蓋が合う
futa ga au

THE LID FITS BADLY
蓋が合わない
futa ga awanai

KNOB
つまみ
tsumami

104



105

These pages are from:
Simpson, Kitto, and Sodeotka,
The Japanese Pottery Book, Revised Edition, 2014

TYPES OF FOOT

kōdai
高台

MOST COMMON



蛇ノ目高台 (普通高台)

輪高台

三日月高台

兜巾高台

二重高台

渦巻高台

貝尻高台

竹ノ節高台

割高台

wariichimonji } Koudo

刺し文定高台

割十文字高台

割一文字高台

撥高台

切高台

十字字高台

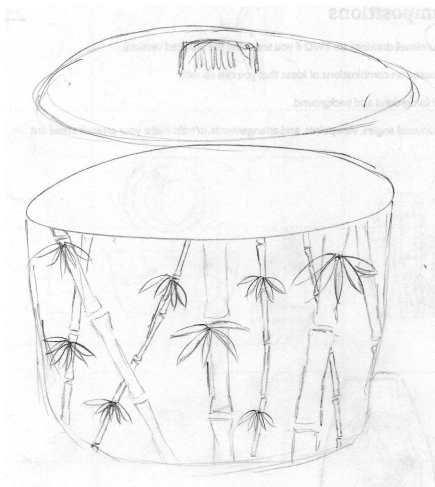
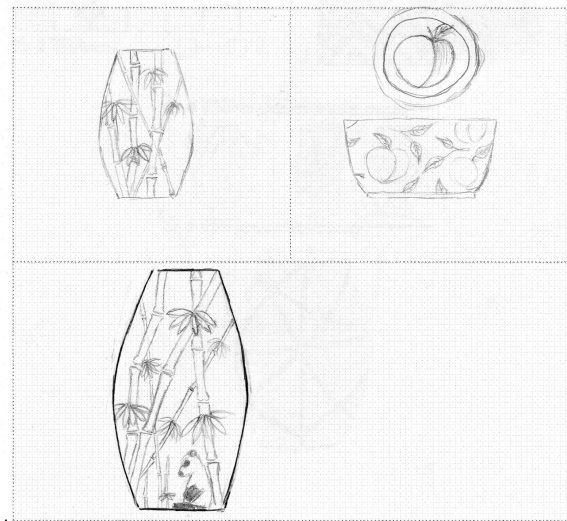
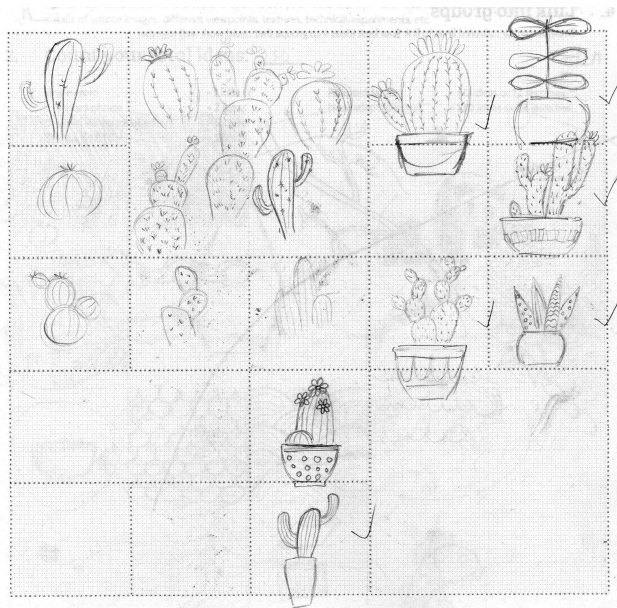
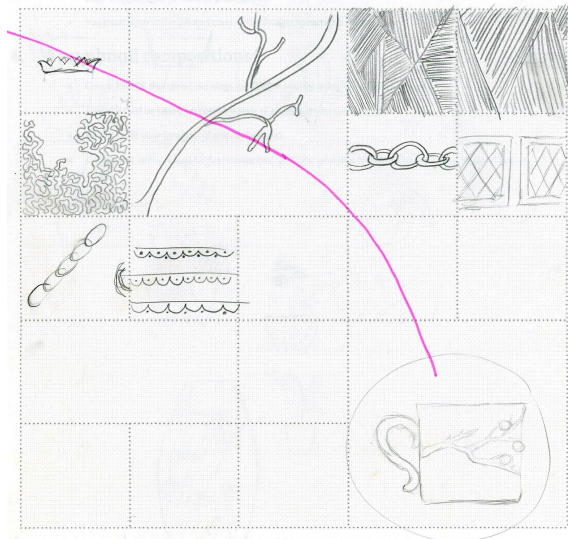
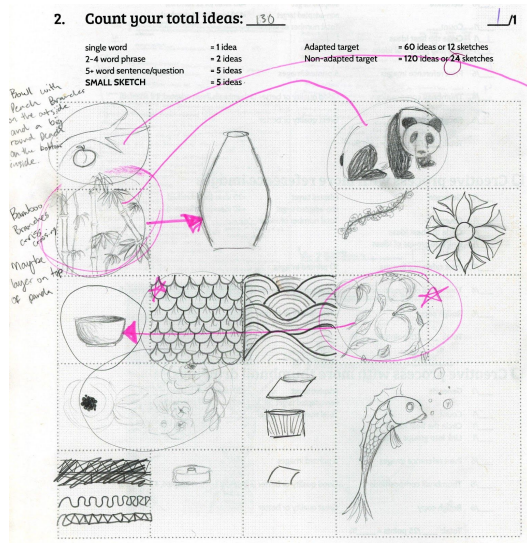
切十文字高台

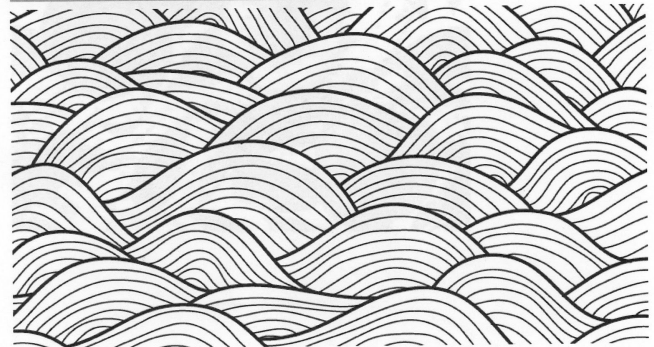
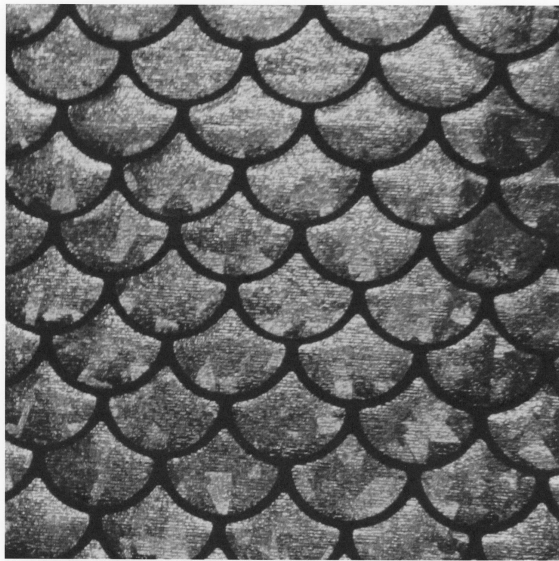
切一文字高台

釘彫高台

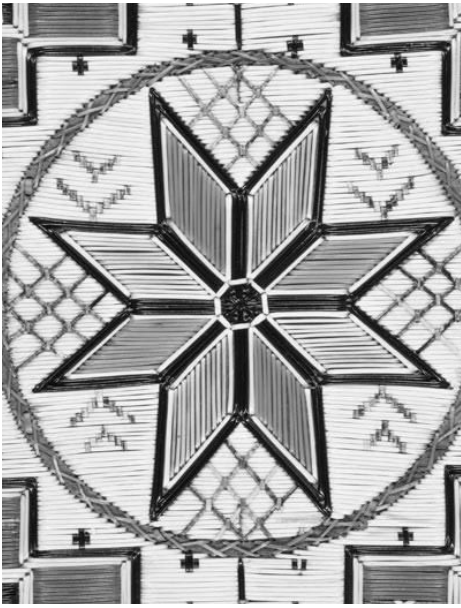
縮緬高台

Lily Kungl's clay vessel





Historical Patterns from around the world



Mi'qmaq



Maliseet



Art Nouveau



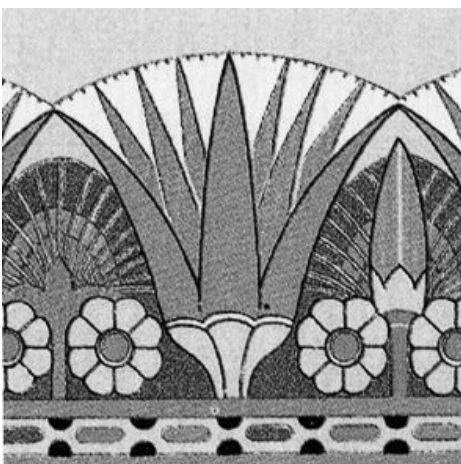
Celtic



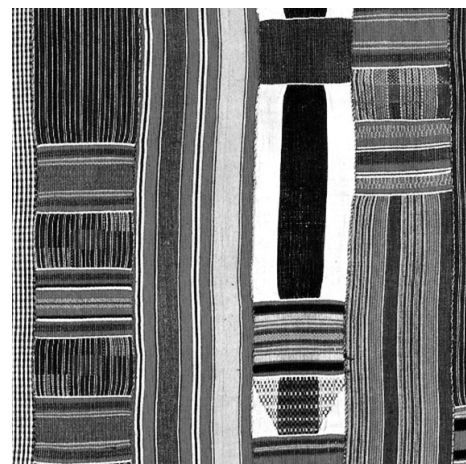
China



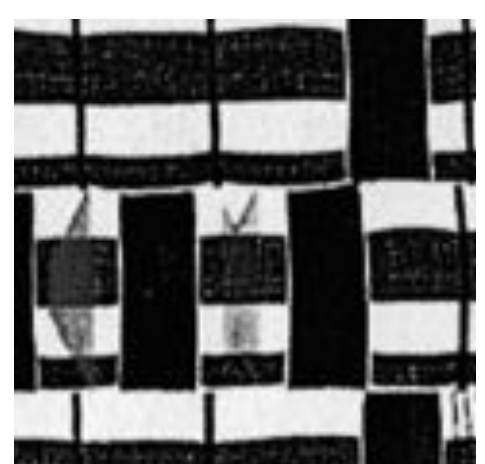
China



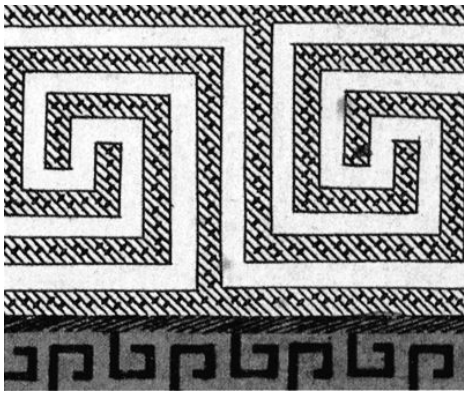
Egypt



Ghana



Ghana



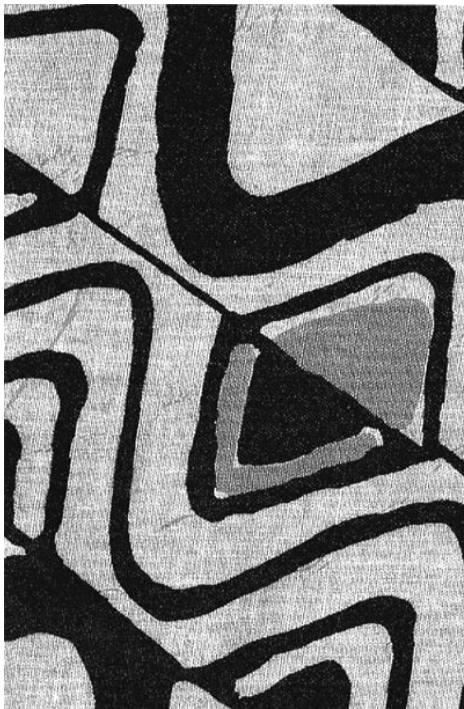
Greece



India



Japan



Mali



Navajo



Roman



Pakistan



Pacific Northwest Coast



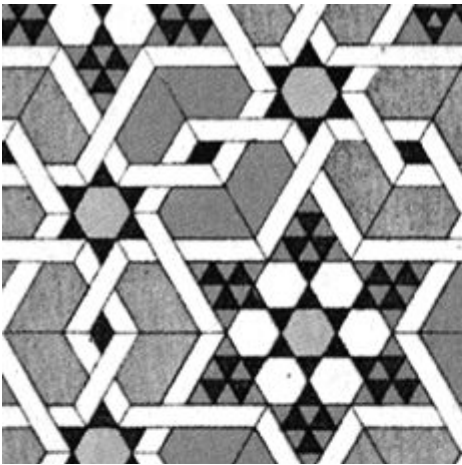
Turkmenistan



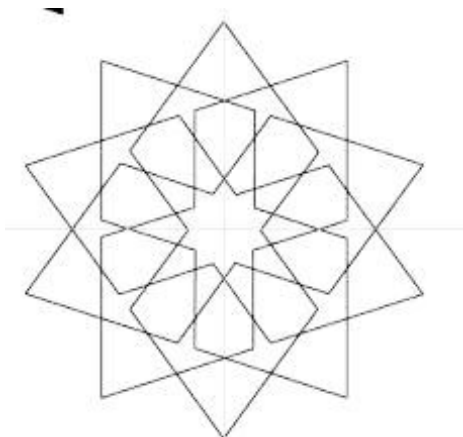
Persia



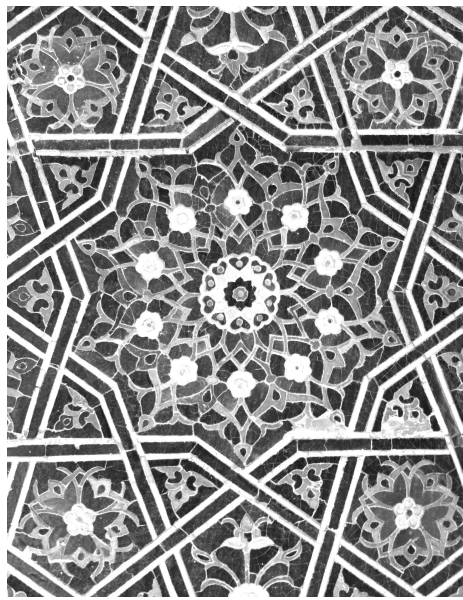
William Morris (Arts and Crafts)



Persia



Islamic pattern



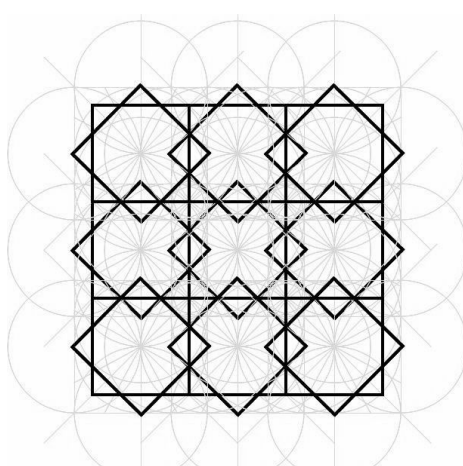
Syrian



Persia



Islamic calligraphy



Islamic pattern

Idea Development

1 **Generate ideas** *maximum of 50%*

of **words** → _____ ÷ 3 = _____%

of **simple** sketches → _____ × 2% = _____%

of **better** sketches → _____ × 4% = _____%

2 **Select the best and join together ideas**

Circle the **best** ideas circled = □ 5%

Link into **groups** of ideas linked = □ 5%

3 **Print reference images** *maximum of 8*

_____ images × 5% = _____%

4 **Thumbnail compositions** *max of 10*

_____ thumbnails × 8% = _____%

5 **Rough copy** *great quality or better*

_____ drawing × 25% = _____%

Total = _____%

Generate ideas!

Use lists, a web map, or simple drawings to come up with a LOT of ideas! If you already have an idea in mind, choose that as your central theme and expand upon it. Let your ideas wander - one idea leads to another. Drawings can be details of source images, different viewpoints, textures, technical experiments, etc.

Adding up points for ideas:

*Number of **words*** → _____ ÷ 3 = _____%

*Number of **simple** sketches* → _____ × 2% = _____%

*Number of **better** sketches* → _____ × 4% = _____%

Select the best

Draw circles or squares around your best ideas

☐ ***You have selected the best 3-7 ideas = 5%***

Link the best into groups = 5%

Draw dashed or coloured lines to link your best ideas into groups that could work well together

☐ ***You have joined the best ideas with lines***

Print references

- Print **SIX** reference images so you can accurately observe the challenging parts of your artwork. Taking and using your own photographs is preferred, but image searches are also fine.
- **Do not simply copy a picture that you find.** The idea is to edit and combine source images to create your own artwork. If you simply copy a picture, you are plagiarizing and will earn a zero for your idea generation and any criteria involving creativity in your final artwork.
- Up to half of your pictures may be of drawings, paintings, or other artworks of others to use as inspiration. The other images must be realistic photographs.
- You must hand in the **printed** copy of the images to earn the marks.

Number of reference photos

→ _____ × 5% = _____%

Thumbnail compositions

- Create **TWO or more** thumbnail drawings anywhere in the idea development section.
- These should be based on combinations of ideas that you come up with. Include your **background**.
- Experiment with unusual angles, viewpoints, and arrangements to help make your artwork stand out.
- Draw a frame around your thumbnails to show the edges of the artwork.

Adding up points for THUMBNAIL drawings

of *thumbnail* drawings → _____ × 8% = _____%

Rough drawing

- Take the best ideas from your thumbnails and combine them into an improved rough copy.
- Use this to work out the bugs and improve your skills before you start the real thing.
- If you are using colour, use paint or coloured pencil to show your colour scheme.
- Draw in a frame to show the outer edges of your artwork.
- ***Remember to choose a non-central composition.***

Rough drawing → **up to 25% = ____%**



Arche David, Fall 2017



Guilia Di Matteo, Fall 2017



Anna Pancura, Fall 2017



Hayden Coyle, Fall 2017



Prabina Bhujel, Fall 2024



Mia Sterling, Fall 2024



Kathleen Lutz, Fall 2024



Ryleigh Pardy, Fall 2024



Sue Kim, Fall 2024



River Eagles, Fall 2024



Melissa Kim, Fall 2024



Libby Oram, Fall 2024



Mara Pereira Verde, Spring 2025



Rivin Hewage, Fall 2024



Meena Mukund, Fall 2024



Fisher LeCocq-Thornhill, Spring 2025